

GE
Critical Power

VCO Series UPS 230 V

1000/2000/3000 VA
Uninterruptible Power Supply (UPS)



Non-stop pure power

Today's 24/7 business world depends on 24/7 power availability and demands zero down time. GE's VCO Series of UPS ensures a continuous supply of clean, conditioned power to all critical loads, protecting against system interruption, data corruption and data loss.

- Voltage and Frequency Independent technology
- Automatic bypass
- Hot swappable batteries
- High output power factor
- Rack and/or tower assembly
- 2U rack height
- LCD display
- Wide input voltage window
- USB and RS232 communication
- SNMP card option
- High efficiency
- Matching battery cabinets
- Multiple load outlets
- Free shutdown software

GE's VCO Series Uninterruptible Power Supply (UPS) is a true double conversion Voltage and Frequency Independent (VFI) UPS, providing the highest level of protection to all loads. Regardless of the quality of power from the grid, the VCO Series will create a brand new sine wave with a fully regulated voltage and frequency; the supported load receives a constant, moderated supply. When the grid power fails, the battery seamlessly steps in to continue the supply and allow for enough time to finish the current process before gracefully initiating an automatic shutdown of the load until the mains returns.

Key features

- Highest level of UPS protection, Voltage and Frequency Independent
- Tower and/or rack configurable
- >95% efficiency
- 2U rack height across all ratings
- LCD display
- Data line surge protection
- Hot swappable batteries
- RoHS and REACH compliant

Applications

- PCs
- Servers
- Mid-sized networks
- Laboratory devices
- Voice/data networks
- Telecom
- Light industrial



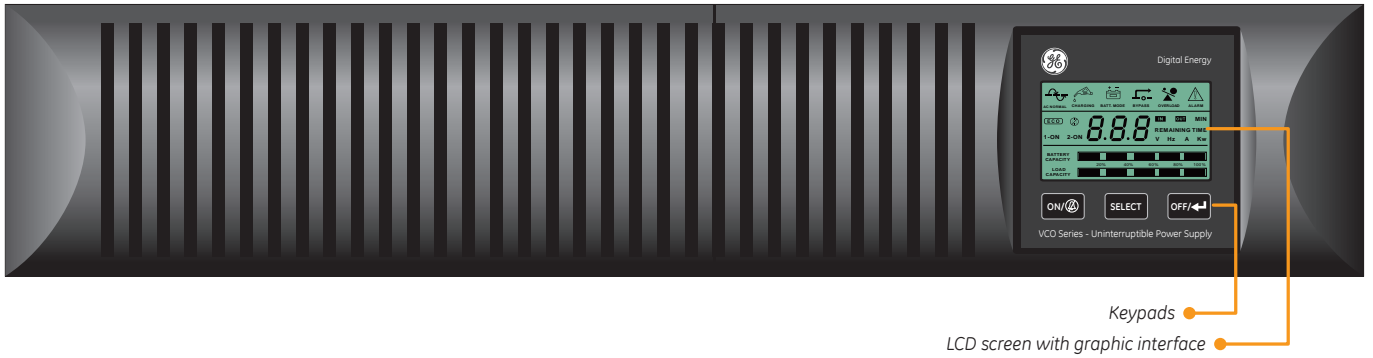
imagination at work

features and benefits

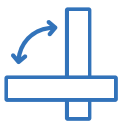
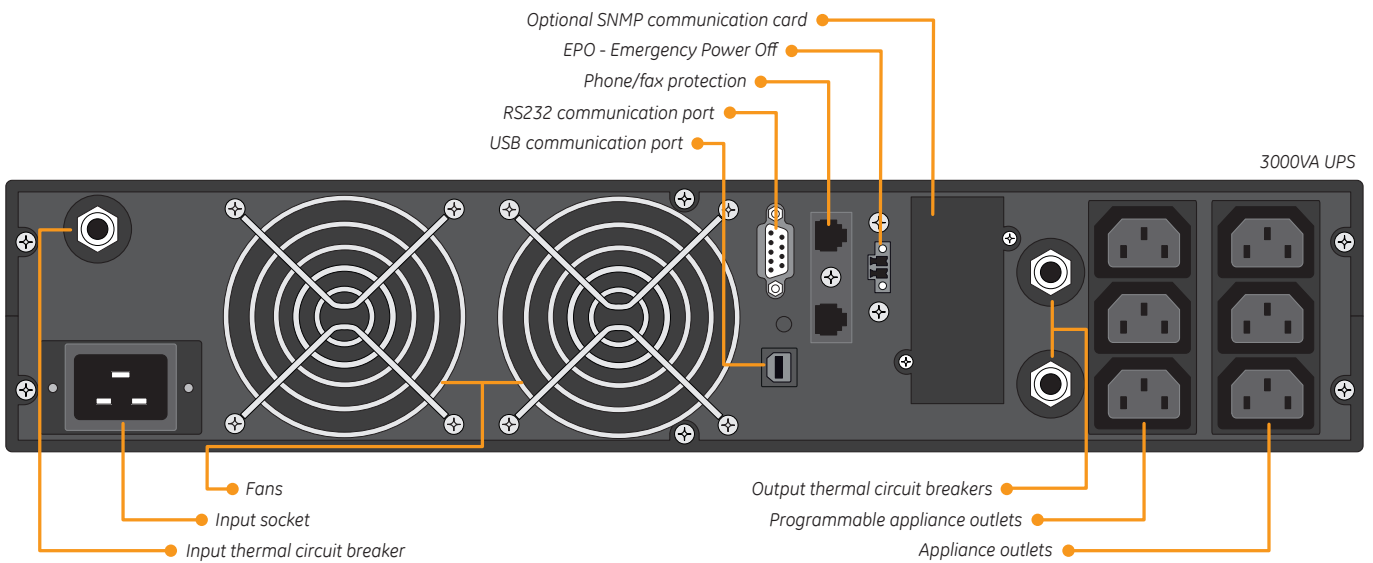
- **Voltage and Frequency Independent (VFI)**
The VCO Series offers the highest UPS protection level available, eliminating power reliability problems.
- **Automatic bypass**
offers maximum reliability. Even in the event of overload or overtemperature, the bypass takes over supplying power to the load while the site behaviour is corrected.
- **Hot swappable, user replaceable batteries**
Batteries can be replaced quickly, safely and simply while the load remains connected, eliminating the need to power off a critical load for standard maintenance and with zero risk to the user.
- **High output power factor**
Provides more actual power to the load and avoids the need to oversize the UPS.
- **Rack and/or tower format**
in a single cabinet. There is no need to select form factor when ordering, and allows for maximum site flexibility. As network demands change, the VCO Series can adapt with the changes.
- **2U height even to 3kVA**
frees rack space for more IT equipment. Small footprint for tower assembly, and parts for assembly delivered in packing box with the UPS.
- **LCD display**
for immediately visible operating parameters such as online and battery status. Rotatable around 90 degrees to suit both tower and rackmount format.
- **Matching external battery cabinets**
for extended runtime over the internal battery autonomy on 3kVA; no need to oversize the UPS to increase the available runtime.
- **Excellent overload protection**
allows for continued operation even if the VCO Series is overloaded for a short period of time; protects against site mistakes and accidental misuse.
- **Automatic battery test**
makes a periodic health check of the batteries, ensuring no surprises. When the battery is required, the battery is available.
- **Wide input voltage window**
minimises battery use and extends the life of the battery. Allows the VCO Series to run undisturbed, when other UPS may have already switched to battery then shut down.
- **RS232 and USB communication as standard**
for maximum flexibility on load connectivity.
- **SNMP card**
available as an option, supporting all major operating platforms. The UPS can be monitored and managed across a network, with web enabled SNMP configuration for full visibility of UPS operation from any location.
- **>95% efficiency**
in high efficiency mode, reducing emergency and operation costs on site.
- **Multiple outlets**
for all ratings; several pieces of equipment can be connected to the VCO Series without adding PDUs or extension strips. One set of outlets can be programmed to switch off in order to increase the remaining runtime.
- **Lightning and transient surge protection**
for additional protection against voltage spikes.
- **Cold start**
The VCO Series can be powered on without mains present to perform a service function or provide emergency power at a remote site.
- **Free automatic shutdown software**
is delivered with each UPS, allowing for a graceful, controlled shutdown of the connected load in the event of a lengthy mains failure.



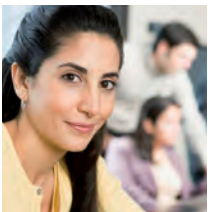
front panel view



rear panel view



The small, lightweight and easily transportable VCO Series can be installed as a tower or rackmounted UPS.



The VCO Series has quiet operation and can be placed directly beside the user for office use.



GE's comprehensive after sales and service support network, present across more than 140 countries, provides full support to the 2 year warranty on the VCO Series.

Technical specifications

Model	VCO1000	VCO2000	VCO3000
Rating VA/W	1000/800	2000/1600	3000/2400
AC input voltage	208 / 220 / 230 / 240 Vac		
AC input voltage, window	120 - 280 Vac		
Frequency	50 / 60 Hz (auto-sensing)		
Input power factor	>0.95 at full load		
AC output voltage	208 / 220 / 230 / 240 Vac (selectable)		
AC output voltage tolerance	±3% at linear load		
Output frequency	50 / 60 Hz (selectable)		
Output frequency stability	nominal ±0.3 Hz unless synchronized to the mains		
Output wave form	sine wave		
Output power factor	0.8		
Harmonic distortion	3% at linear load		
Efficiency (ECO Mode)	>95%		
Number of outlets (<i>programmable</i>)	4 (2)	6 (3)	6 (3)
Runtime at typical load (60%), minutes	7	8	8
Weight (kg)	16	32	38
Dimensions (h x w x d, mm)	88x440x405	88x440x620	88x440x620
Display type	LCD - Liquid Crystal Display		
Safety	IEC/EN 62040-1		
EMC	IEC/EN 62040-2		
Ambient temperature	0 °C to 40 °C		
Sound at 1 meter	<55 dB(A), load and temperature dependent		
Maximum relative humidity	95% (non-condensing)		

Specifications subject to change without prior notice

Who we are

GE Critical Power

We support and serve customer power needs from the building infrastructure through to end devices, providing overall power to the system and at board level. A history of leading technology and decades of research and development enables GE's Critical Power business to provide specialized products, engineered solutions, and global professional services for customers in key markets and industries. Our goal is to provide you with reliable and efficient solutions that will help to reduce energy consumption as well as minimize the operating costs associated with supplying power to your applications.

Our products

GE has been designing and developing UPS for more than 40 years. In addition to Uninterruptible Power Supplies, GE's Critical Power business includes power switching devices, DC energy systems and embedded power supplies such as board mounted power and front end rectifiers.

Our VCO Series is one of several GE UPS ranges designed to meet all power protection requirements, ranging from 400VA to 4MVA across single phase and three phase. For more information, visit www.gecriticalpower.com or contact us.



your distributor:

GE Consumer & Industrial SA
Via Cantonale 50
6595 Riazzino (Locarno)
Switzerland
T +41 (0) 91 850 51 51
F +41 (0) 91 850 52 52
E info.ups@ge.com

Visit us online at:
www.gecriticalpower.com

